

OCTOBER 2017- Workshop
Wednesdays and Thursdays, 5 PM-7:15 PM.

Earth Science Outside: Tooele County Geology and Heritage
for recertification credit

***SCHEDULE and LOCATIONS
on the next page (scroll down).***

More info, FAQ.

ANNOUNCEMENTS!!

All sessions outside (unless bad weather). All sessions at different places in Tooele County. (See reverse side for session locations and topics.)

Connect the spectacular geology of Tooele County to the **new Utah Science Framework**. Appreciate how the geology of Tooele County came to be.

Taught by Genevieve Atwood, PhD, former State Geologist of Utah, with volunteers of Earth Science Education.

For TEACHERS - **recertification credit via Tooele School District**. Earn one credit per session to a maximum of four credits. Just show up! No homework. Generally one in-class assignment per session.

Open to responsible public meaning, at minimum, adults interested in Tooele's geology. Children under 18 only when supervised by an adult other than the teacher-participant.

Safety first! Wear sensible clothes and shoes. Meeting outside involves inherent risks including weather, footing, insects, etc. Must sign waiver.



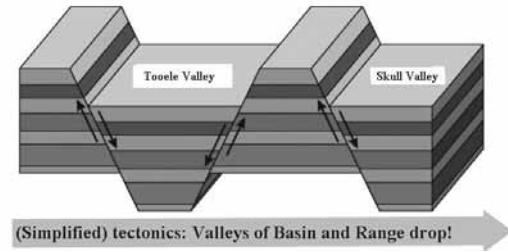
OBJECTIVES:

- * *Model the new Utah Science Framework.*
- * *Recognize Earth science phenomena of Tooele County.*
- * *Consider the importance of Tooele County's record of climate change from the Ice Ages to the present.*
- * *Appreciate Tooele County's mining heritage.*
- * *Learn about Basin and Range tectonics.*
- * *Practice, how to tell older geology from younger.*

IMPORTANT! KEEP checking for announcements such as change of location due to bad weather. (LINK is in box above and some on next page.)
First session Wednesday October 4, 5PM, Tooele School District Headquarters, 92 S. Lodestone Way, Tooele 84074

October 4 Wednesday
Tooele School District Headquarters
92 S. Lodestone Way, Tooele, UT 84074
Familiar landforms can help almost anyone's sense of direction AND contribute to their "sense of place."

October 5 Thursday
Tooele Valley Airport (Erda Airport)
4663 N Airport Rd, Erda, UT 84074
The distance between the Oquirrh Mountains and the Stansbury Mountains is increasing.



October 11 Wednesday Stansbury Island
See detailed info: www.earthscienceeducation.org

Scientists study shorelines of Tooele County for evidence of past Ice Ages and future climate changes.

October 12 Thursday Ophir Canyon
Meet at the intersection of Highway 73 and Ophir Canyon Rd

The Oquirrh Mountains are a geologically young feature made of bedrock that is old.



October 18 Wednesday Middle Canyon Elementary School 751 E 1000 North, Tooele.

The Oquirrh Mountains have proven to be the very richest district of the United States.

October 19 Thursday No session!!

UEA week and also Earth Science Week

October 25 Wednesday Meet at Stockton Town Hall parking 18 N Johnson St, Stockton

Fossils of bedrock near Stockton are evidence that what-is-now-Tooele County was south of the equator and near sea level long ago.



October 26 Thursday Grantsville Cemetery 370 W Main St, Grantsville

Halloween is an excellent time to connect history and Earth science at your local cemetery. Minerals are the building blocks of rocks.

**AND... Consider another Earth Science Outside workshop:
Teacher Trilobite Day, Saturday, October 14
West of Delta, UT. Family fun!
Flier (announcement) and More information.**

